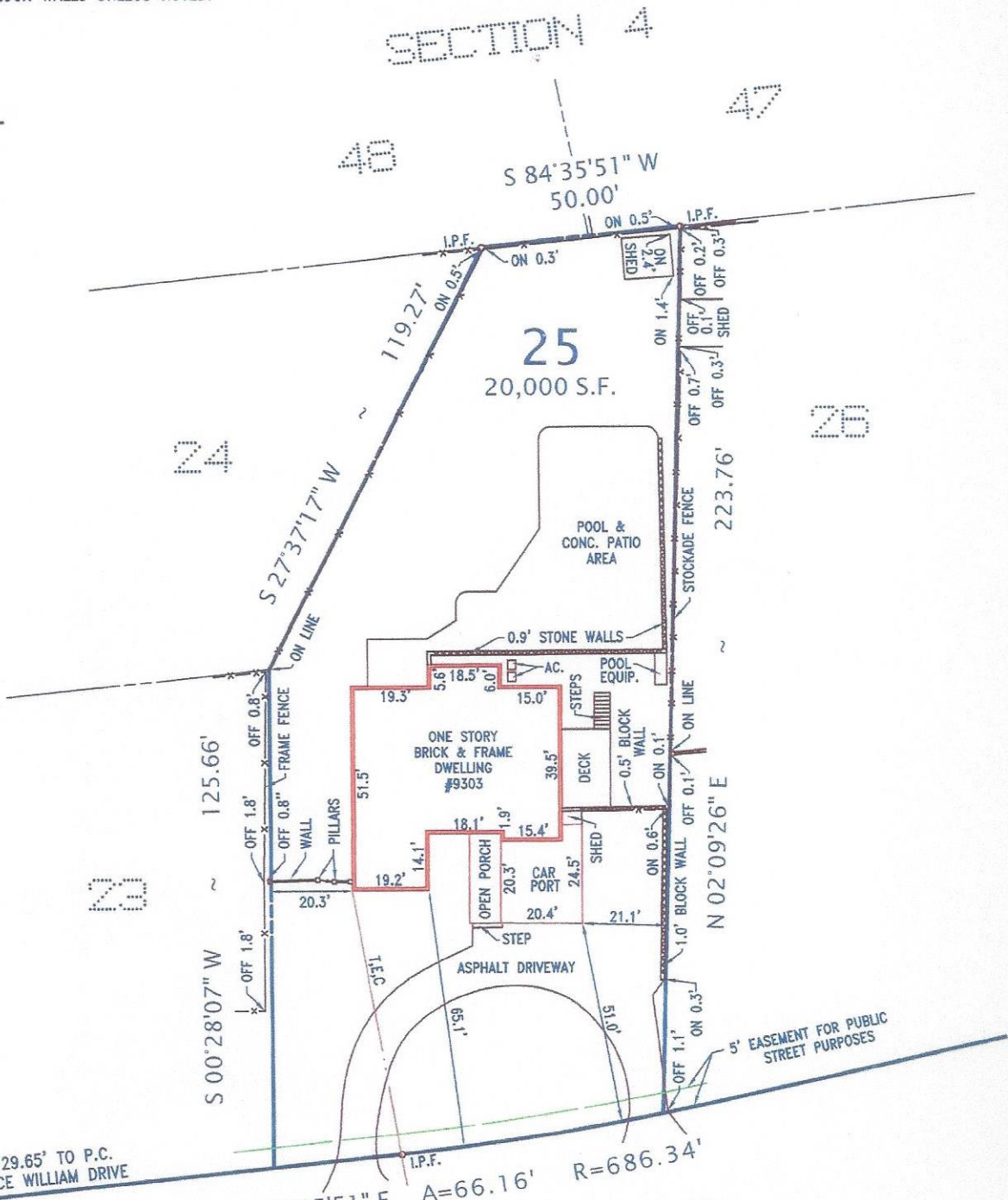


2. 0.3' BLOCK WALLS UNLESS NOTED.

SECTION 4



129.65' TO P.C. PRINCE WILLIAM DRIVE

N 84°35'51" E A=66.16' R=686.34'
 32.35'

HAMILTON DRIVE

50' R/W

PLAT

SHOWING HOUSE LOCATION ON
 LOT 25 SECTION 1

MANTUA HILLS

FAIRFAX COUNTY, VIRGINIA

SCALE: 1" = 40' NOVEMBER 18, 2005